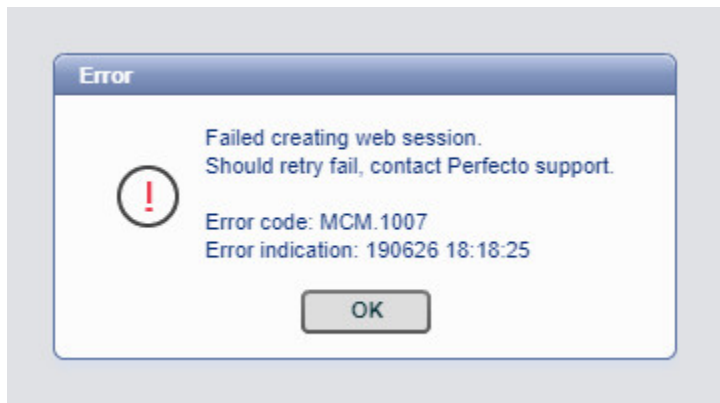



Troubleshooting (WEB) - MAC machine doesn't open in IDE (Error MCM.1007)

In most cases error MCM.1007 happens when user tries to open MAC machine in the Flash UI after these machines were migrated to the HTML5 UI.



 The MAC machine should be opened via HTML5 UI only.

Related articles

- [Troubleshooting \(WEB\) - Microsoft Edge fails on timeout/inactivity error](#)
- [How to pass Chrome SameSite cookie policies via capabilities](#)
- [Session Sharing: Session ID](#)
- [Troubleshooting: Network Virtualization and HAR Captures](#)
- [How to pass Chrome options as capabilities](#)